



**India Meteorological Department
(Ministry of Earth Sciences)**

NATIONAL BULLETIN NO. 13 (BOB/07/2024)

TIME OF ISSUE: 2230 HOURS IST

DATED: 27.11.2024

FROM: INDIA METEOROLOGICAL DEPARTMENT (FAX NO. 24643965/24699216/24623220)

TO: CONTROL ROOM, NDM, MINISTRY OF HOME AFFAIRS (FAX.NO. 23093750)

CONTROL ROOM NDMA (FAX.NO. 26701729)

CABINET SECRETARIAT (FAX.NO.23012284, 23018638)

PS TO HON'BLE MINISTER FOR S & T AND EARTH SCIENCES (FAX NO.23316745)

SECRETARY, MOES (FAX NO. 24629777)

H.Q. (INTEGRATED DEFENCE STAFF AND CDS) (FAX NO. 23005137/23005147)

DIRECTOR GENERAL, DOORDARSHAN (23385843)

DIRECTOR GENERAL, AIR (23421105, 23421219)

PIB MOES (FAX NO. 23389042)

UNI (FAX NO. 23355841)

D.G. NATIONAL DISASTER RESPONSE FORCE (NDRF) (FAX NO. 26105912, 2436 3260)

DIRECTOR, PUNCTUALITY, INDIAN RAILWAYS (FAX NO. 23388503)

CHIEF SECRETARY, ANDAMAN & NICOBAR ISLANDS (FAX NO. 03192-232656)

CHIEF SECRETARY, TAMIL NADU (FAX NO. 044-25672304)

CHIEF SECRETARY, ANDHRA PRADESH (FAX NO. 0863-2441029)

CHIEF SECRETARY, PUDUCHERRY (FAX NO. 0413-2334145)

CHIEF SECRETARY, ODISHA (FAX NO. 0674-2536660)

Sub: Deep depression over Southwest Bay of Bengal

The Deep Depression over Southwest Bay of Bengal moved slowly north-northwestwards with a speed of 3 kmph during past 6 hours and lay centred at 1730 hours IST of today, the 27th November 2024 over the same region near latitude 8.9°N and longitude 82.1°E, about 100 km east-northeast of Trincomalee, 320 km southeast of Nagappattinam, 420 km southeast of Puducherry and 500 km south-southeast of Chennai.

It is very likely to continue to move north-northwestwards skirting Sri Lanka coast and intensify into a cyclonic storm during next 12 hours. Thereafter, it will continue to move north-northwestwards and reach near north Tamil Nadu-Puducherry coasts as a deep depression around morning of 30th November.

The system is being tracked by DWR Karaikal. A continuous watch is being maintained for the movement and intensification of system.

Forecast track and intensity are given in the following table:

Date/ Time (IST)	Position (Lat. °N/ long. °E)	Maximum sustained surface wind speed (Kmph)	Category of cyclonic disturbance
27.11.24/1730	8.9/82.1	55-65 gusting to 75	Deep Depression
27.11.24/2330	9.2/82.0	55-65 gusting to 75	Deep Depression
28.11.24/0530	9.6/82.0	60-70 gusting to 80	Cyclonic Storm
28.11.24/1130	10.0/81.9	60-70 gusting to 80	Cyclonic Storm
28.11.24/1730	10.4/81.8	65-75 gusting to 85	Cyclonic Storm
29.11.24/0530	11.0/81.5	65-75 gusting to 85	Cyclonic Storm
29.11.24/1730	11.5/81.0	60-70 gusting to 80	Cyclonic Storm
30.11.24/0530	11.9/80.6	55-65 gusting to 75	Deep Depression
30.11.24/1730	12.3/80.1	50-60 gusting to 70	Deep Depression

Warnings:

(i) Rainfall Warning:

Tamil Nadu & Puducherry: Light to moderate rainfall at many places with Heavy to very heavy rainfall at isolated places is very likely over coastal Tamil Nadu-Puducherry on 27th & 28th November and heavy to very heavy rainfall at isolated places is likely over north tamil Nadu – Puducherry on 29th & 30th November.

Coastal Andhra Pradesh: Light to moderate rainfall at many places with heavy rainfall at isolated places is likely south coastal Andhra Pradesh during 28th to 30th November.

Rayalaseema: Light to moderate rainfall at many places with heavy rainfall at isolated places is likely on 29th & 30th November.

Kerala: Light to moderate rainfall at many places with heavy rainfall at isolated places is likely on 1st December.

(ii) Wind warning:

- Squally wind speed reaching 55-65 kmph gusting to 75 kmph is prevailing over southwest Bay of Bengal and along & off Sri Lanka coast. It is likely to increase becoming Gale wind speed reaching 60-70 kmph gusting to 80 kmph over southwest Bay of Bengal and along & off Sri Lanka coasts from morning of 27th November.
- Gale wind speed reaching 65-75 kmph gusting to 85 kmph is likely to prevail over southwest Bay of Bengal from evening of 28th November till morning of 29th November. Thereafter, it is likely to decrease becoming squally winds speed reaching 50-60 kmph gusting to 70 kmph by evening of 30th November.
- Squally wind speed reaching 40-50 kmph gusting to 60 kmph is likely to prevail over adjoining westcentral Bay of Bengal from 28th November evening. It is likely to increase becoming 50-60 kmph gusting to 70 kmph from 29th evening till 30th November evening.
- Squally wind speed reaching 45-55 kmph gusting to 65 kmph is prevailing along & off Tamil Nadu - Puducherry and 35-45 kmph gusting to 55 kmph along & off south Andhra Pradesh coasts. It is likely to increase becoming 50-60 kmph gusting to 70 kmph from 28th evening till 30th November evening.

(iii) Sea condition:

- Rough to very Rough Sea condition is likely to prevail along & off Sri Lanka coast till evening of 28th November.
- Rough to very Rough Sea condition is prevailing over southwest Bay of Bengal It is likely to become high from 28th morning till 29th November evening and improve thereafter becoming very rough to rough till 30th November.

- Rough to very rough Sea condition is very likely to prevail along and off Tamil Nadu- Puducherry and south Andhra Pradesh coasts till 30th November.
- Rough to very Rough Sea condition is likely to prevail over adjoining westcentral Bay of Bengal from 28th evening till 30th November.

(iv) Fisherman warning:

- Fishermen are advised not venture into
 - southwest Bay of Bengal and along & off Sri Lanka & Tamilnadu coasts till 30th November.
 - Adjoining areas of Westcentral Bay of Bengal and along & off south Andhra Pradesh coast during 28th to 30th November.
- Fishermen out at sea are advised to return to coasts immediately.

(v) Impact Expected [over Tamil Nadu – Puducherry and south Andhra Pradesh]

- Localized Flooding of roads, water logging in low lying areas.
- Occasional reduction in visibility due to heavy rainfall in some areas.
- Disruption of traffic in major cities due to water logging in roads leading to increased travel time in some areas.
- Minor damage to kutcha roads.
- Damage to horticulture and standing crops in some areas due to inundation.

(vi) Action Suggested

- Fishermen are advised not venture into
 - southwest Bay of Bengal and along & off Sri Lanka & Tamilnadu coasts till 30th November.
 - Adjoining areas of Westcentral Bay of Bengal and along & off south Andhra Pradesh coast during 28th to 30th November.
- Fishermen out at sea are advised to return to coasts immediately
- Check for traffic congestion on your route before leaving for your destination.
- Follow any traffic advisories that are issued in this regard.
- Avoid going to areas that face the water logging problems often.
- Special care may be taken for fishing ponds and poultries over coastal areas.
- Avoid staying in vulnerable structure.

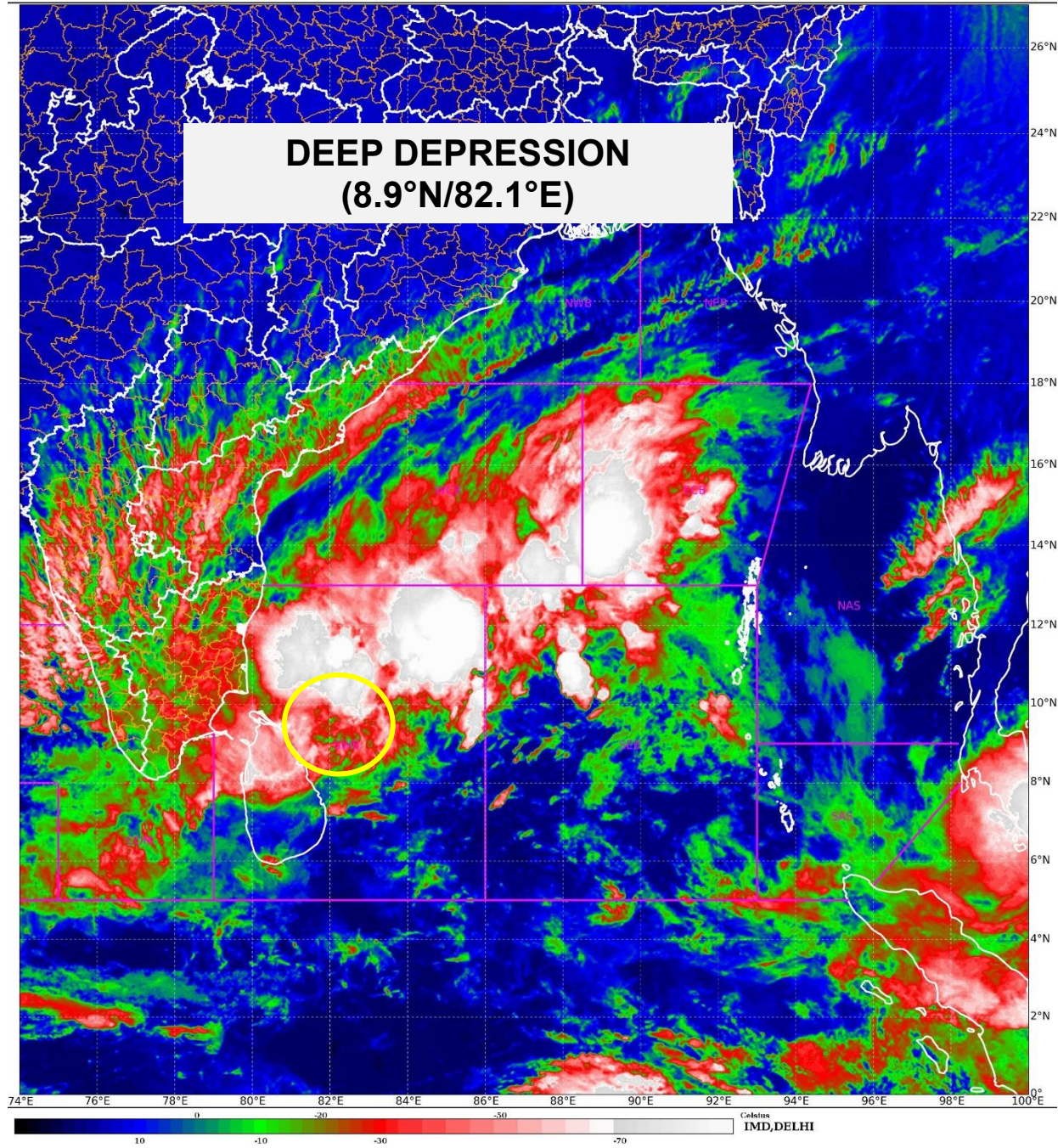
(vii) Agromet advisories [over Tamil Nadu – Puducherry and Andhra Pradesh]

- Provide adequate drainage facilities for the removal of excess water from rice, cotton, sugarcane, turmeric and vegetable fields, coconut and banana orchards. Provide mechanical support to banana plants to prevent lodging.
- Make arrangements to drain out excess water from the standing crop fields and fruit orchards in Kerala and Coastal Andhra Pradesh.
- Harvest the matured crops and keep it in safe place.
- Provide mechanical support to horticultural crops and staking to vegetables.

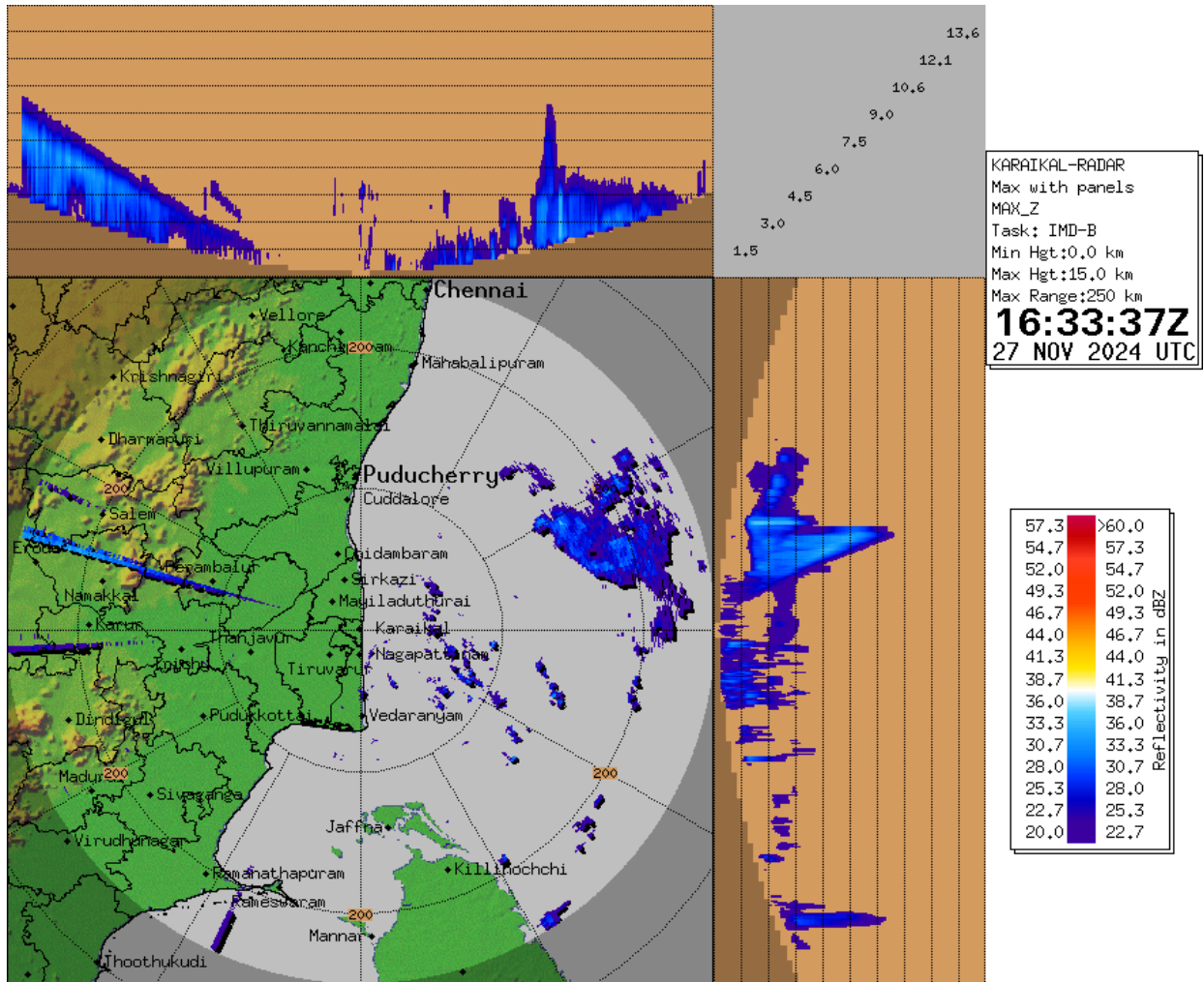
Next bulletin will be issued at 0230 hours IST of tomorrow, the 28th November, 2024.

**(Dr. Ananda Kumar Das)
Scientist F, RSMC, New Delhi**

Copy to: ACWC Kolkata/ACWC Chennai/CWC Bhubaneswar/MC, Amaravati/MC, Thiruvananthapuram/CWC, Vishakhapatnam

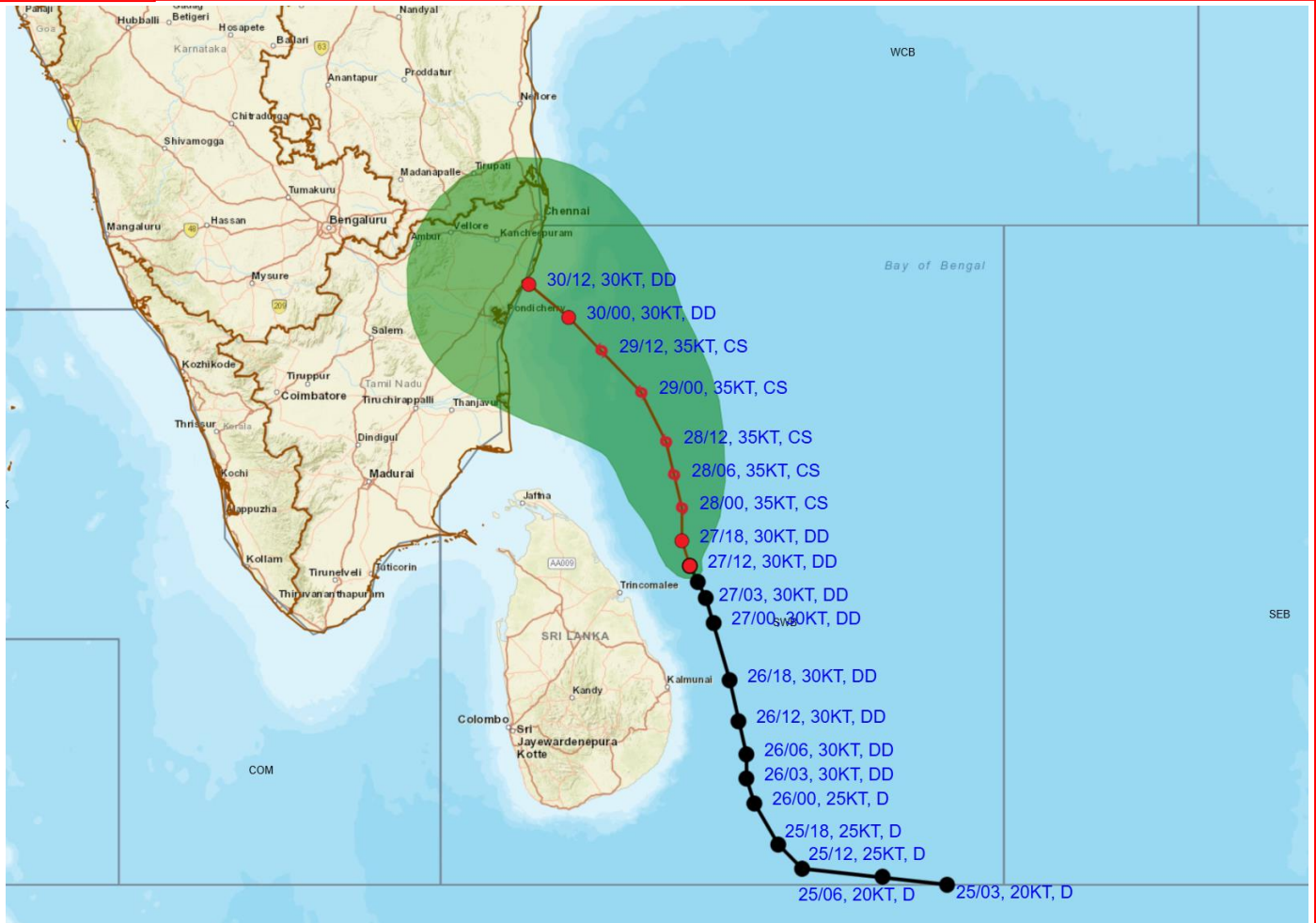


Doppler Weather Radar Observation (Max Z) at Karaikal





OBSERVED AND FORECAST TRACK ALONG WITH CONE OF UNCERTAINTY OF DEEP DEPRESSION OVER SOUTHWEST BAY OF BENGAL BASED ON 1200 UTC (1730 HRS. IST) OF 27TH NOVEMBER, 2024



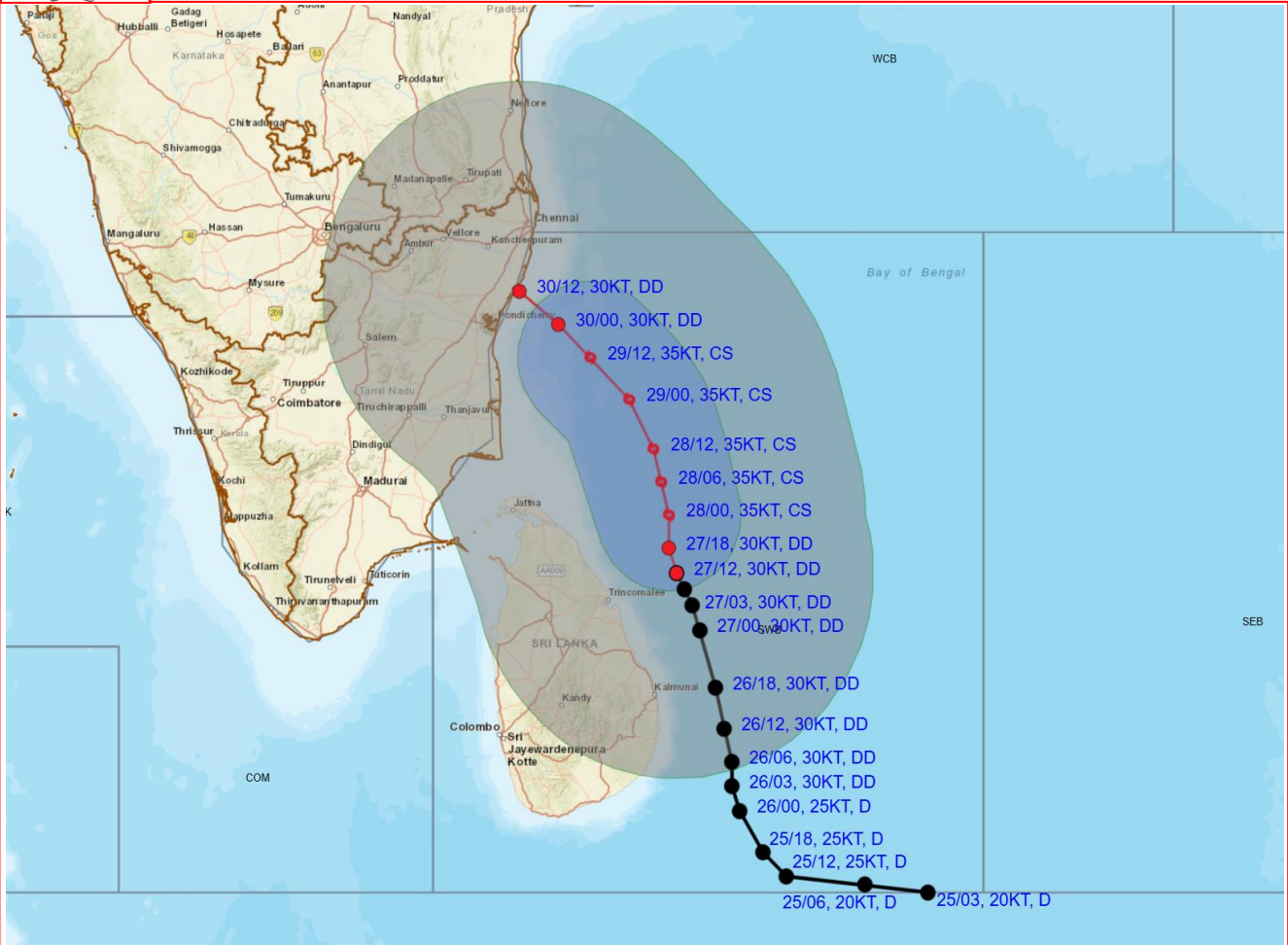
DATE/TIME : IN UTC
 IST : UTC + 0530
 KT : NAUTICAL MILE S/HOUR = 1.85 KM/HOUR
 LPA : LOW PRESSURE AREA
 WML : WELL MARKED LOW PRESSURE AREA
 D : DEPRESSION (17-27 KT)
 DD : DEEP DEPRESSION (28-33 KT)
 CS : CYCLONIC STORM (34-47 KT)
 SCS : SEVERE CYCLONIC STORM (48-63 KT)
 VSCS : VERY SEVERE CYCLONIC STORM (64-89 KT)
 ESCS : EXTREMELY SEVERE CYCLONIC STORM (90-119 KT)
 SuCS : SUPER CYCLONIC STORM (≥ 120 KT)

LESS THAN 34 KT
 34-47 KT
 ≥ 48 KT
 OBSERVED TRACK
 FORECAST TRACK
 CONE OF UNCERTAINTY

Forecast	DISTANCE (KM) AND DIRECTION FROM STATIONS				
Date and Time (UTC)	BATTICALOA	TRINCOMALEE	NAGAPPATTINAM	PUDUCHERRY	CHENNAI/MINAMBAKKAM
27.11.24/1200	140, NNE	100, ENE	320, SE	420, SE	500, SSE
28.11.24/1200	300, N	210, NNE	220, E	280, SE	340, SSE
29.11.24/1200	430, N	330, N	150, ENE	140, ESE	190, SSE
30.11.24/1200	540, NNW	430, NNW	170, N	50, NE	80, S



OBSERVED AND FORECAST TRACK ALONGWITH QUADRANT WIND DISTRIBUTION OF DEEP DEPRESSION OVER SOUTHWEST BAY OF BENGAL BASED ON 1200 UTC (1730 HRS. IST) OF 27TH NOVEMBER, 2024.



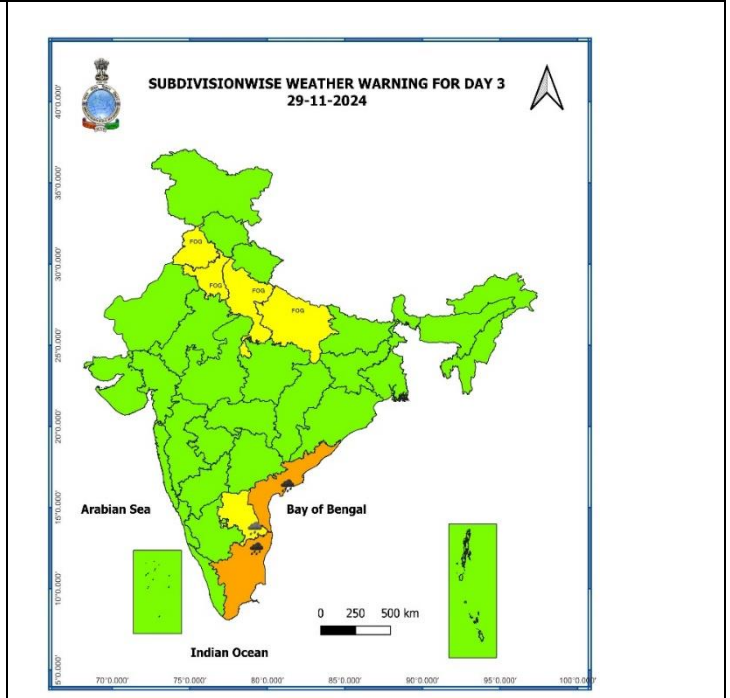
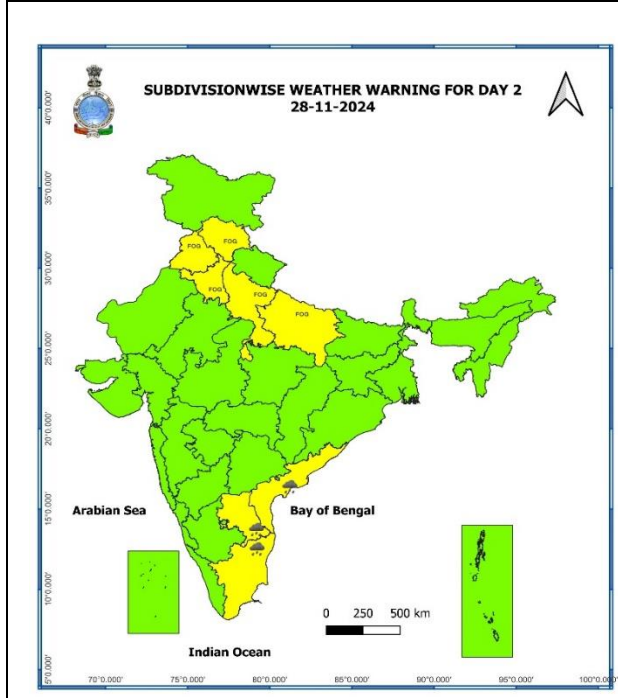
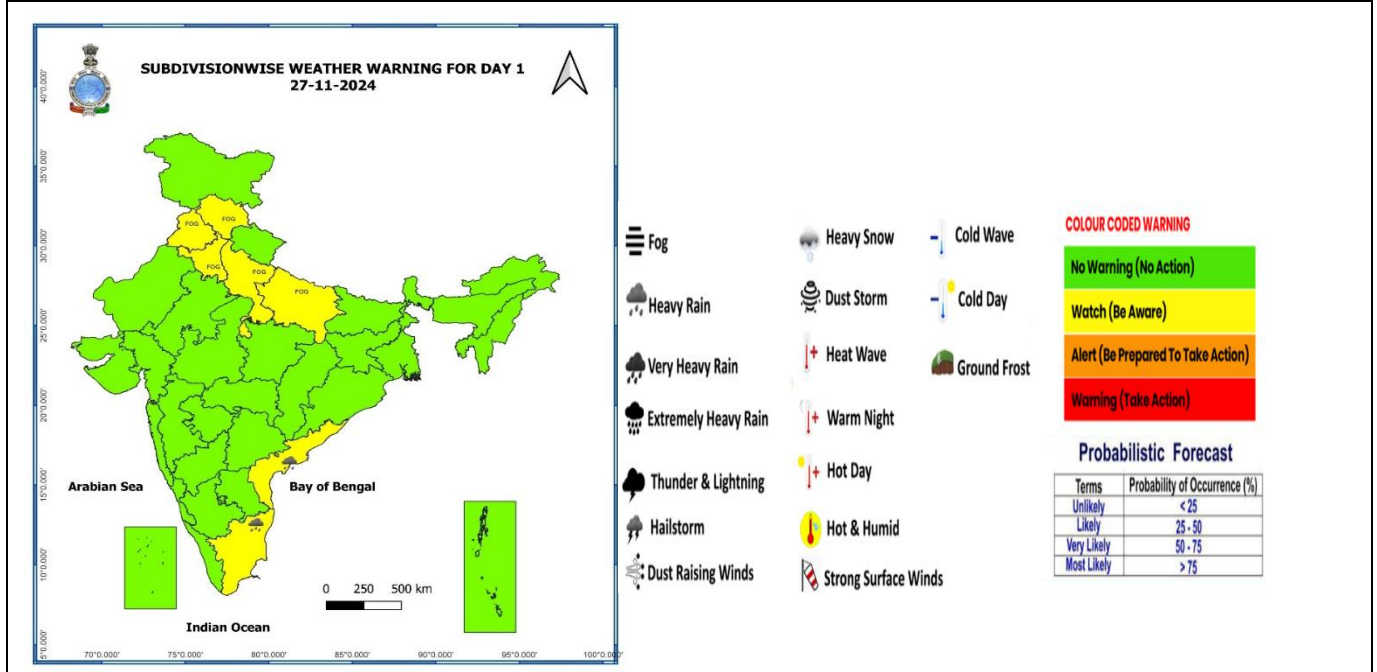
DATE/TIME : IN UTC
 IST : UTC + 0530
 KT : NAUTICAL MILE/HOUR = 1.85 KM/HOUR
 LPA : LOW PRESSURE AREA
 WML : WELL MARKED LOW PRESSURE AREA
 D : DEPRESSION (17-27 KT)
 DD : DEEP DEPRESSION (28-33 KT)
 CS : CYCLONIC STORM (34-47 KT)
 SCS : SEVERE CYCLONIC STORM (48-63 KT)
 VSCS : VERY SEVERE CYCLONIC STORM (64-89 KT)
 ESCS : EXTREMELY SEVERE CYCLONIC STORM (90-119 KT)
 SuCS : SUPER CYCLONIC STORM (≥ 120 KT)

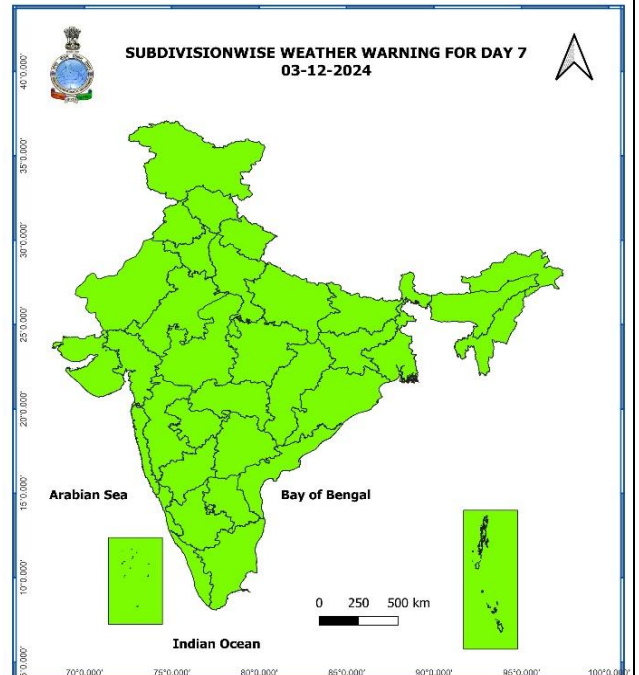
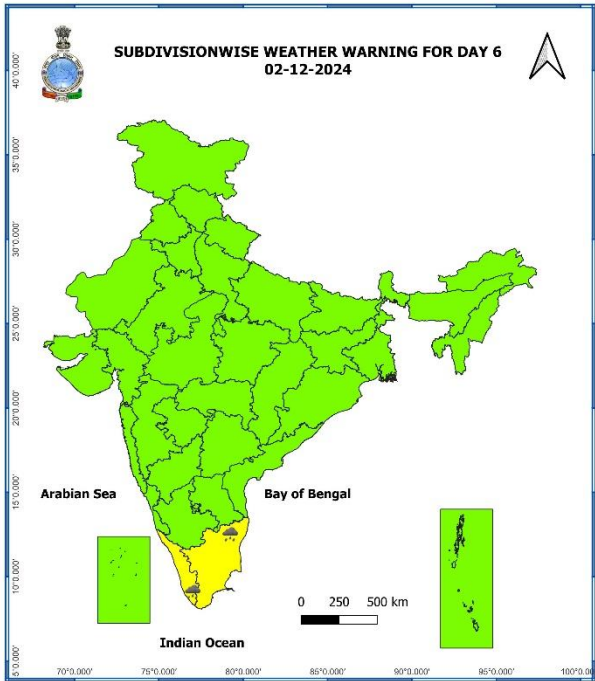
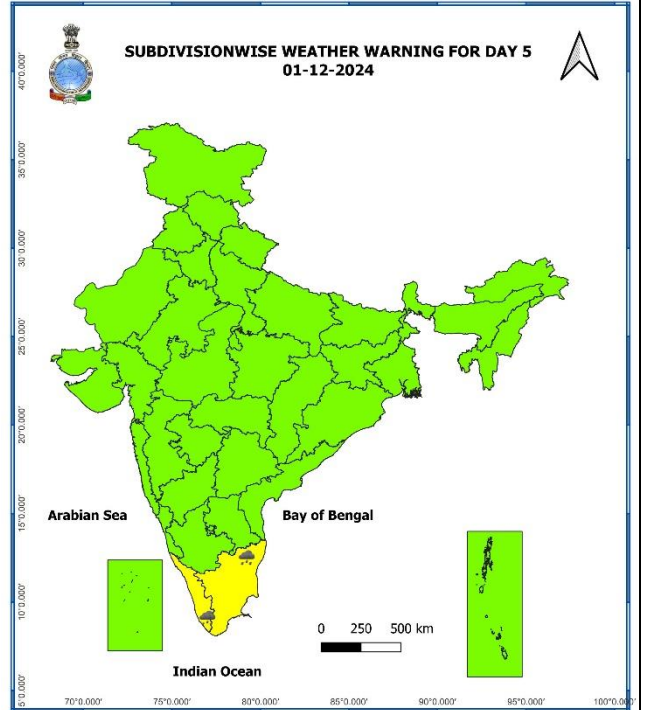
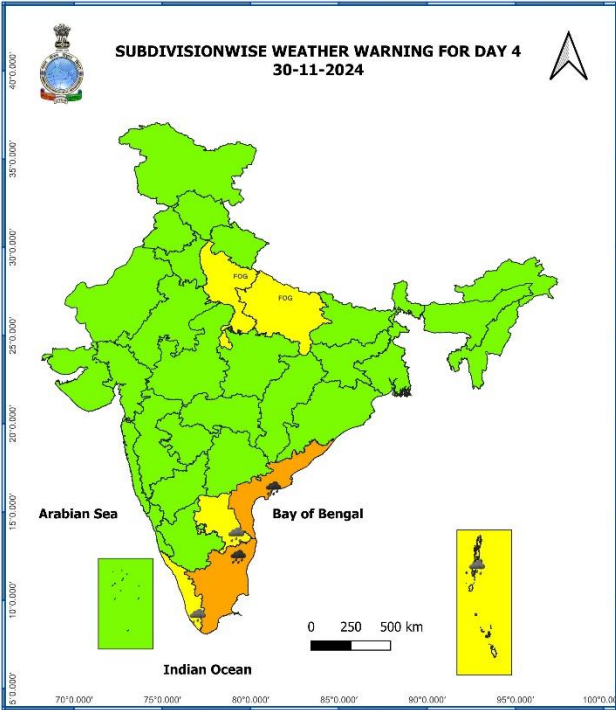
● LESS THAN 34 KT
 ○ 34-47 KT
 ● ≥ 48 KT
 — OBSERVED TRACK
 — FORECAST TRACK
 — CONE OF UNCERTAINTY
AREA OF MAXIMUM SUSTAINED WIND SPEED:
 ■ 28-33 KT (52-61 KMPH)
 ■ 34-49 KT (62-91 KMPH)
 ■ 50-63 KT (92-117 KMPH)
 ■ ≥ 64 KT (≥ 118 KMPH)

IMPACT OVER THE SEA

MSW (knot/kmph)	Impact	Action
28-33 (52-61)	Very rough seas	Total suspension of fishing operations
34-49 (62-91)	High to very high seas	Total suspension of fishing operations
50-63 (92-117)	Very high seas	Total suspension of fishing operations
≥ 64 (≥ 118)	Phenomenal	Total suspension of fishing operations

Weather Warning Graphics





- Action may be taken based on **ORANGE AND RED** COLOUR warnings.
- Vulnerable regions likely urban and hilly areas action may be initiated for heavy rainfall warning.
- As the lead period increases forecast accuracy decreases.

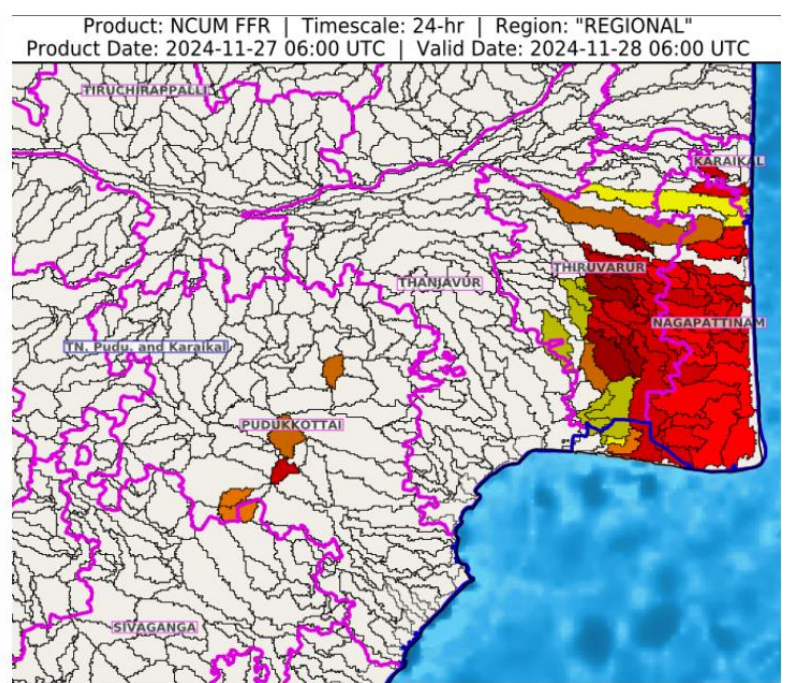
Flash Flood Guidance

24 hours Outlook for the Flash Flood Risk (FFR) till 1130 IST of 28-11-2024:

Moderate to High flash flood risk likely over few watersheds & neighbourhoods of following Met Sub-divisions during next 24 hours.

Tamil Nadu - Pudu & Karaikal - Karaikal, Nagapattinam, Pudukkottai and Thiruvarur districts.

Surface runoff/ Inundation may occur at some fully saturated soils & low-lying areas over AoC as shown in map due to expected rainfall occurrence in next 24 hours.



Flash Flood Risk

 **High Risk (Take Action)**

 **Moderate Risk (Be Prepared)**

 **Low Risk (Be Updated)**

Fishermen Warning Graphics

